

Solfre

One & Two Component Polyurethane Adhesives

Strength · Reliability · Innovation


Chemique
Adhesives

Solfre[®]

One & Two Component Polyurethane Adhesives

The Solfre range consists of an extremely versatile range of adhesives that offer excellent chemical and moisture resistance.

Being solvent free, this range of adhesives overcomes the problem of trapped solvent and consequent delamination.

This polyurethane adhesive is available in both one and two component formulas ideal for panel lamination, that uses both insulation and honeycomb core materials.

Solfre adhesives can also be used to bond a wide variety of substrates, including metal, plastic, wood and foam.

Open times (at 68°F) range from 5 to 90 minutes allowing for multiple formulations as well as ensuring product stability.

Solfre industrial adhesives have been specifically designed for use in the manufacturing of the following:

- ✓ Architectural Panels
- ✓ Building Panels
- ✓ Wall Cladding
- ✓ SIPS Panels
- ✓ Modular Housing
- ✓ Portable Structures
- ✓ Recreation Vehicles
- ✓ Motorhomes
- ✓ Specialty Vehicles
- ✓ Train Cabins
- ✓ Truck Bodies
- ✓ Marine Panels
- ✓ Composite Panels
- ✓ Insulated Panels
- ✓ Clean Rooms
- ✓ Walk-In Refrigeration
- ✓ Partitions & Cubicles
- ✓ Pre-Fabricated Buildings / Offices

Adhesive Application

All of the adhesives in the Solfre range can be applied either manually or automatically by rolling, beading or spraying, complementing a wide variety of production methods and requirements.

Packaging

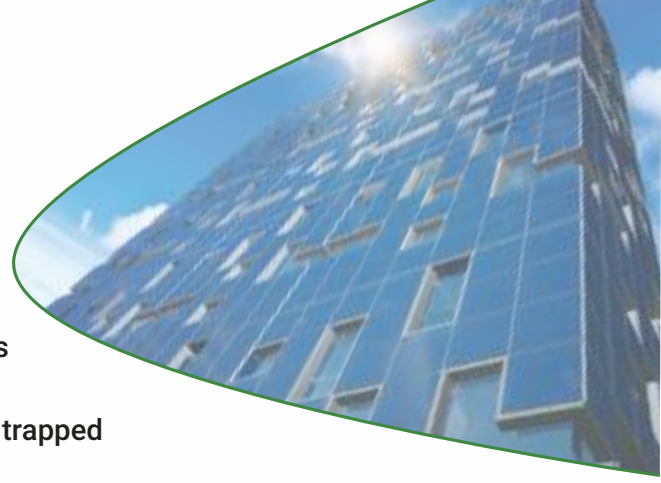
A full range of packaging options are available, dependent on quantity requirement and application environment, including the following:

- 1.1 kg Poly Bottle
- 235 kg Tighthead Drum
- 6 kg Can
- 1150 kg IBC
- 28 kg Poly Container
- 5 kg Twin Bucket



Features:

- ✓ 100% Solvent Free - No VOC Emissions
- ✓ Wide range of Standard Formulas
- ✓ Variable Coating Weights
- ✓ Controlled Cure Rates
- ✓ Low Maintenance



Solfre¹

Solfre1 is a one component solvent free polyurethane adhesive suitable for a range of applications. Its unique formulation provides superior resistance to chemicals, heat, humidity and thermal shock making it ideally suited for construction, composite panels, truck building, caravan panels and many other industries where a structural permanent bond is required.

Solfre1:

- Solvent Free
- Moisture Cure
- Wide range of operating temperatures
- Non-Flammable
- Hot & Cold Press Adhesive
- Low & High Viscosity



Solfre²

Solfre2 is a two component solvent free polyurethane adhesive that offers a unique alternative to epoxies, one part polyurethanes, solvented adhesives and hot melts.

Solfre2:

- Solvent Free
- No Moisture Cure Requirement
- Wide range of operating temperatures
- Non-Flammable
- Hot & Cold Press Adhesive
- Low & High Viscosity

Solfre² Honeycomb



Solfre2 Honeycomb is an extension of the Solfre2 family and has been specially formulated for manufacturing honeycomb panels and composite products, ensuring maximum bond strength on minimal contact surface area. It combines the unique properties associated with the Solfre2 range, providing superior bond strength, while still maintaining flexibility.

Solfre2 Honeycomb:

- Solvent Free
- Non-Flammable
- Thixotropic - Ideal for vertical surfaces with improved coverage
- Unique Rheology - Allows the adhesive to form a wicking effect on the wall of the honeycomb core, therefore increasing the surface area bond contact



TOTAL SERVICE PACKAGE



Solfre

One & Two Component Polyurethane Adhesives

Our commitment to providing outstanding service means that all of our customers receive our unique service and support package.

For over three decades we have provided Chemique's Total Service Package and this ensures that you receive the right product, the right application and the right service.

Our Total Service Package* includes:

- ✓ **Tailor-Made Adhesive and Sealant Solutions**
Chemique works closely with customers to provide formulations that suit their particular needs.
- ✓ **Rigorous Quality Control**
The company's manufacturing and service procedures comply with ISO 9001 quality standards, providing peace of mind that all of our adhesives meet exact technical specifications.
- ✓ **Full Engineering & Technical Support**
Chemique's fully trained staff offer on-going technical support as well as:
 - Advice on improving the production process
 - Pre-delivery adhesive and equipment testing
 - Installation of new equipment
 - Servicing of pumps, spray guns and other equipment
 - Engineering call outs
 - Service contracts
- ✓ **Product Demonstrations & Samples**
We offer demonstrations and samples of our adhesives so that customers can be sure that the product meets all of their requirements before ordering.
- ✓ **Comprehensive Training**
Full training can be provided on the product and application equipment, providing peace of mind for the customer.
- ✓ **Full Range of Accessories**
A full range of cleaners, sealants, primers and coatings are available along with stock of spare parts and filters for all standard application equipment.
- ✓ **After Sales Support**
We provide full after sales support to ensure that all products and equipment are working to specification.

*Note: Charges may apply. Please contact Chemique for further details



www.chemiqueadhesives.com

Chemique Adhesives Inc.
3050 Matlock Drive,
Kennesaw, Ga, 30144

Tel: +1 770 451 2904 Fax: + 770 234 4143
Email: info@chemiqueadhesives.com